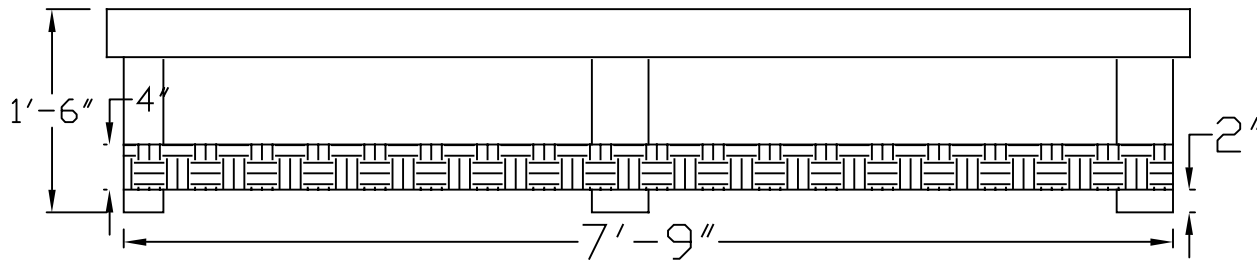
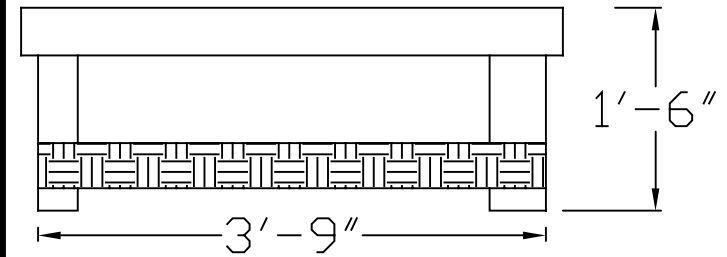


- For 4x4 platforms, three sides are braced with 4" strips of $\frac{3}{4}$ " plywood. (Use older or scrap plywood for this; keep the new AC plywood for platform tops)
- For 4x4 platforms, one side is braced with a 2x4
- For 4x8 platforms, both short sides and one long side are braced with 4" strips of $\frac{3}{4}$ " plywood.
- For 4x8 platforms, one long side is braced with a 2x4
- The bottom horizontal braces are 2" from the bottom of the leg.
- Attach the brace with three to five evenly spaced 2" screws at each point. (3" screws through 2x4s)
- MAKE SURE THAT THE LEGS ARE LEVEL BEFORE ATTACHING THE BRACES.

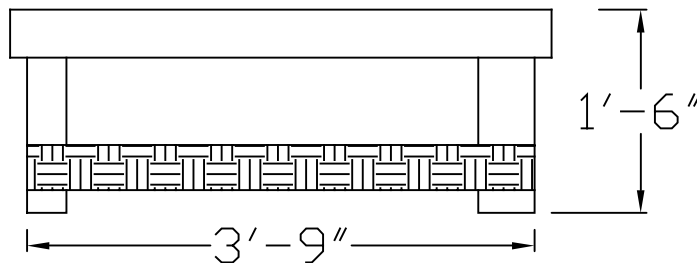
4" wide plywood strips on 1 long side



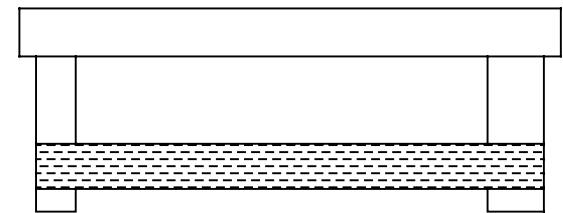
4" wide plywood strips on 3 sides



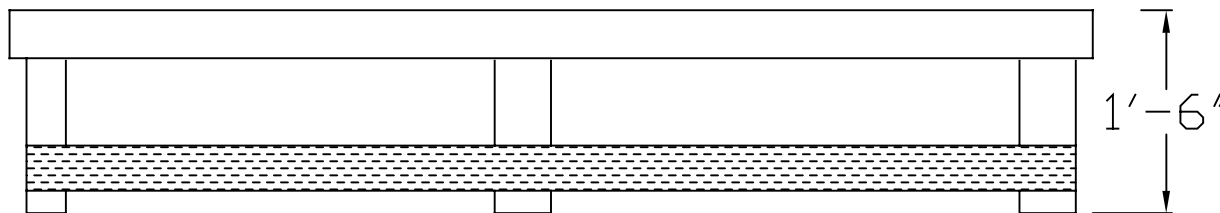
4" wide plywood strips on both short sides



2x4 on 1 side



2x4 on 1 long side



Joseph and the Amazing Technicolor Dreamcoat	
Winston Churchill High School	Fall 2001
4x8 and 4x4 Platform Bracing: 18"	
Objects are in relative scale.	Daniel Heffman